



From the Rise of Medicine to Biomedicalization: U.S. Healthscapes c1890-Present with Global Implications

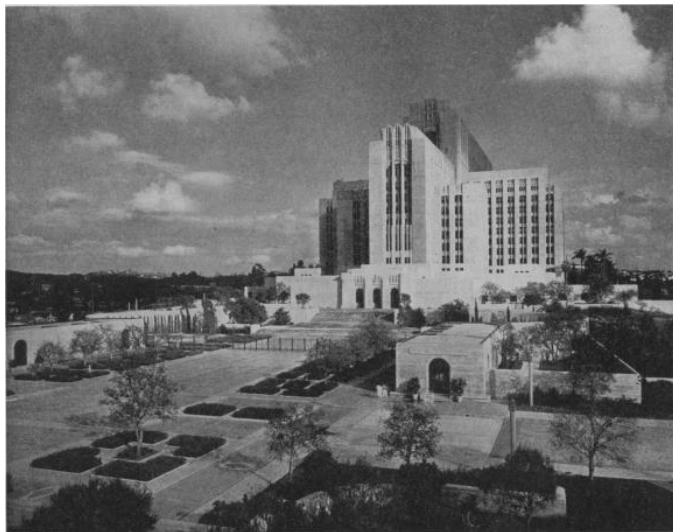
Professor Adele E. Clarke, University of California, San Francisco

Introduction by Professor Stephen Garton (University of Sydney).

Responses from A/Prof Marilys Guillemin (University of Melbourne) and Dr Melinda Cooper (University of Sydney)

Thursday July 23rd 5.00-7.00pm, Eastern Avenue Lecture Theatre (Upstairs theatre) The University of Sydney

This paper centres on popular, especially visual, cultures of medicine, health and healing characteristic of three eras in the U.S. I present the 'healthscapes' of these three eras -- ways of grasping through words, images and material cultural objects the patterned changes that have occurred in the performance, framing and discourses of health and medicine. The rise of medicine era, c1890-1945, featured physicians, surgeries and hospitals as powerful new sites of care provision. During the era of medicalization c1945-1985, drugs, patients, and providers as people were dominant. In the present and ongoing era of biomedicalization, which commenced c1985, the spotlight is on high tech interventions performed by teams in complex biomedical settings, along with expanding knowledge and decision-making burdens placed on patients as consumers. The paper also notes alternative approaches and counter-trends that complicate and even challenge seemingly tidal flows toward global biomedicalization.



Adele E. Clarke is Professor of Sociology and Adjunct Professor of History of Health Sciences at the University of California, San Francisco. Clarke's research has focused on social, cultural, and historical studies of science, technology, and medicine. She is particularly interested in biomedicalization and common medical technologies pertinent to women's health such as contraception and the Pap smear. Clarke's work includes *Disciplining Reproduction: American Life Scientists and the 'Problem of Sex'* (University of California Press, 1998), and collaborative research on biomedicalization in the U.S.A., which appeared in *American Sociological Review* 68(April):161-194.

Please RSVP by July 17th to Lindy Gaze lgaze@med.usyd.edu.au
Campus map: <http://db.auth.usyd.edu.au/directories/map/largemap00a.html>
Refreshments will be provided after the lecture

A version of this paper will appear in *Biomedicalization: Technoscience, Health and Illness in the U.S.*, edited by Adele E. Clarke, Jennifer Fosket, Laura Mamo, Janet Shim, and Jennifer Fishman. Durham, NC: Duke University Press, 2009.